



Leotek Electronics Co.

Operator Jean-Charles MATHIEU
 Telephone
 Fax
 e-Mail jcmathieu@leddistribution.fr

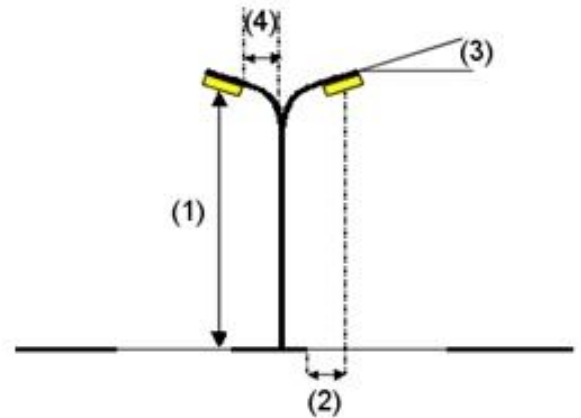
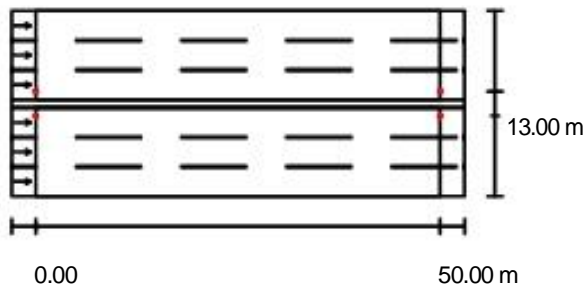
GC2-100E-MV-CW-3M-GY-530-50m / Planning data

Street Profile

- Roadway 2 (Width: 11.000 m, Number of lanes: 3, tarmac: R3, q0: 0.070)
- Median 1 (Width: 1.000 m, Height: 0.000 m)
- Roadway 1 (Width: 11.000 m, Number of lanes: 3, tarmac: R3, q0: 0.070)

Light loss factor: 1.00

Luminaire Arrangements



<p>Luminaire:</p> <p>Luminous flux (Luminaire):</p> <p>Luminous flux (Lamps):</p> <p>Luminaire Wattage:</p> <p>Arrangement:</p> <p>Pole Distance:</p> <p>Mounting Height (1):</p> <p>Height:</p> <p>Overhang (2):</p> <p>Boom Angle (3):</p> <p>Boom Length (4):</p>	<p>LEOTEK ELECTRONICS GC2-100E-MV-CW-3-GY (530MA) CAST GRAY ENAMEL ALUMINUM HOUSING, FORMED GRAY ENAMEL ALUMINUM REFLECTOR, NO ENCLOSURE</p> <p>13410 lm</p> <p>13410 lm</p> <p>180.0 W</p> <p>on Median</p> <p>50.000 m</p> <p>13.000 m</p> <p>13.000 m</p> <p>1.000 m</p> <p>0.0 °</p> <p>1.500 m</p>	<p>Maximum luminous intensities</p> <p>at 70°: 550 cd/klm</p> <p>at 80°: 103 cd/klm</p> <p>at 90°: 0.00 cd/klm</p> <p>Any direction forming the specified angle from the downward vertical, with the luminaire installed for use.</p> <p>No luminous intensities above 90°.</p> <p>Arrangement complies with luminous intensity class G2.</p> <p>Arrangement complies with glare index class D.6.</p>
--	---	---



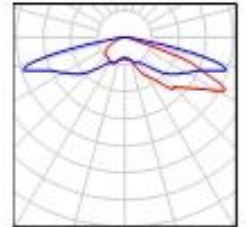
Leotek Electronics Co.

Operator Jean-Charles MATHIEU
Telephone
Fax
e-Mail jcmathieu@leddistribution.fr

GC2-100E-MV-CW-3M-GY-530-50m / Luminaire parts list

LEOTEK ELECTRONICS GC2-100E-MV-CW-3-GY (530MA) CAST GRAY ENAMEL ALUMINUM HOUSING, FORMED GRAY ENAMEL ALUMINUM REFLECTOR, NO ENCLOSURE
Article No.: GC2-100E-MV-CW-3-GY (530MA)
Luminous flux (Luminaire): 13410 lm
Luminous flux (Lamps): 13410 lm
Luminaire Wattage: 180.0 W
Luminaire classification according to CIE: 100 CIE flux code: 24 67 100 84 98
Fitting: 1 x 100 WHITE LEDS WITH CLEAR PLASTIC OPTICS BELOW EACH (Correction Factor 1.100, NW(4300K) to CW(5600K)).

See our luminaire catalog for an image of the luminaire.

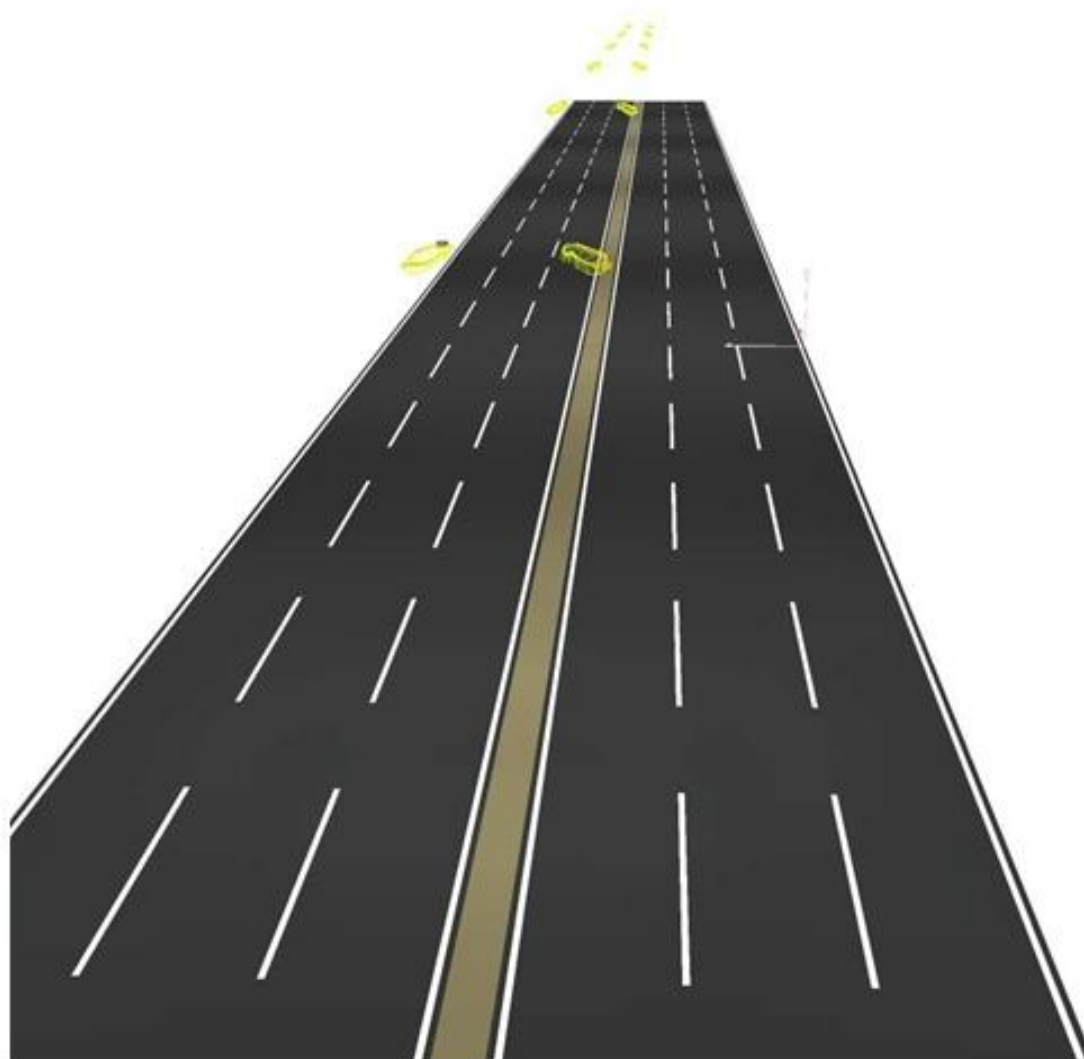




Leotek Electronics Co.

Operator Jean-Charles MATHIEU
Telephone
Fax
e-Mail jcmathieu@leddistribution.fr

GC2-100E-MV-CW-3M-GY-530-50m / 3D Rendering

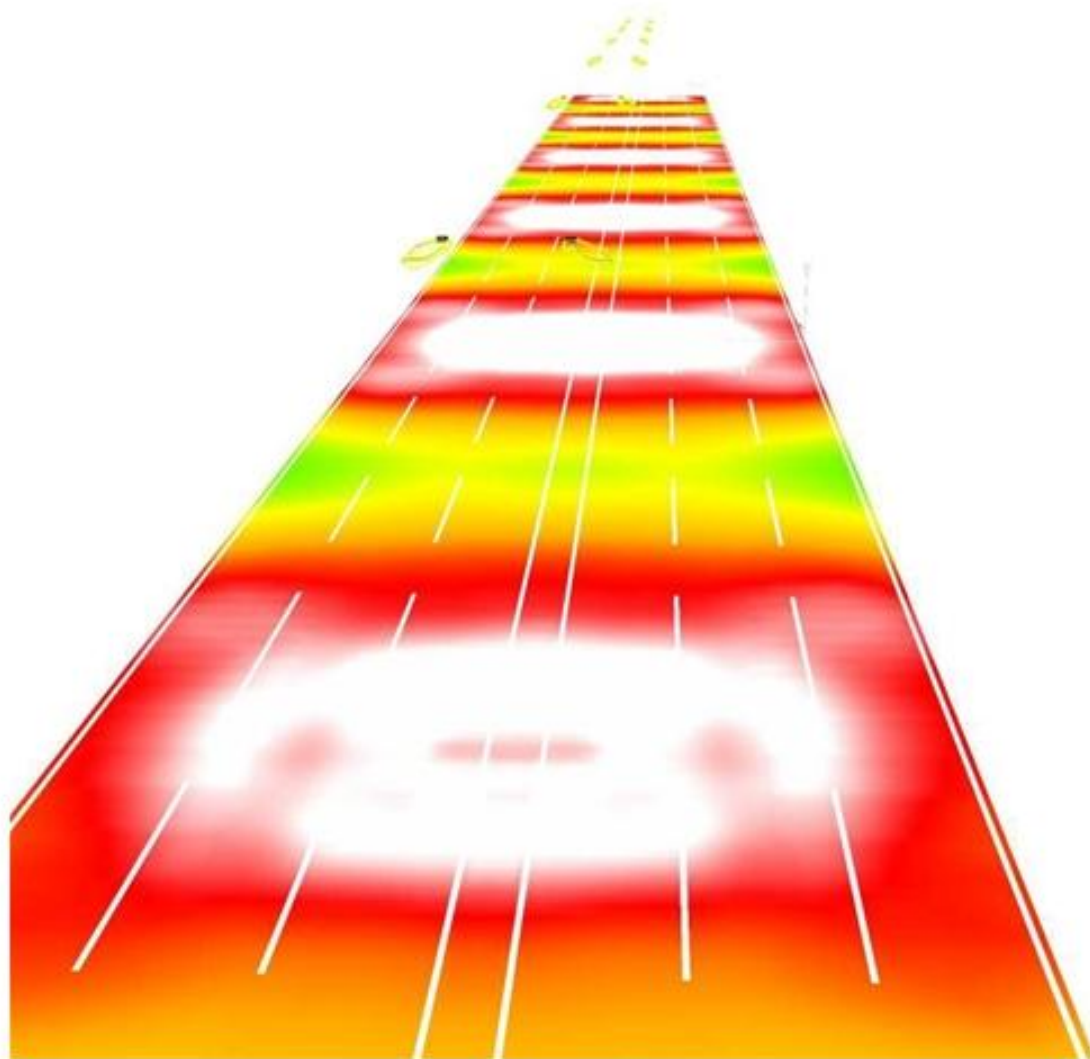




Leotek Electronics Co.

Operator Jean-Charles MATHIEU
Telephone
Fax
e-Mail jcmathieu@leddistribution.fr

GC2-100E-MV-CW-3M-GY-530-50m / False Color Rendering



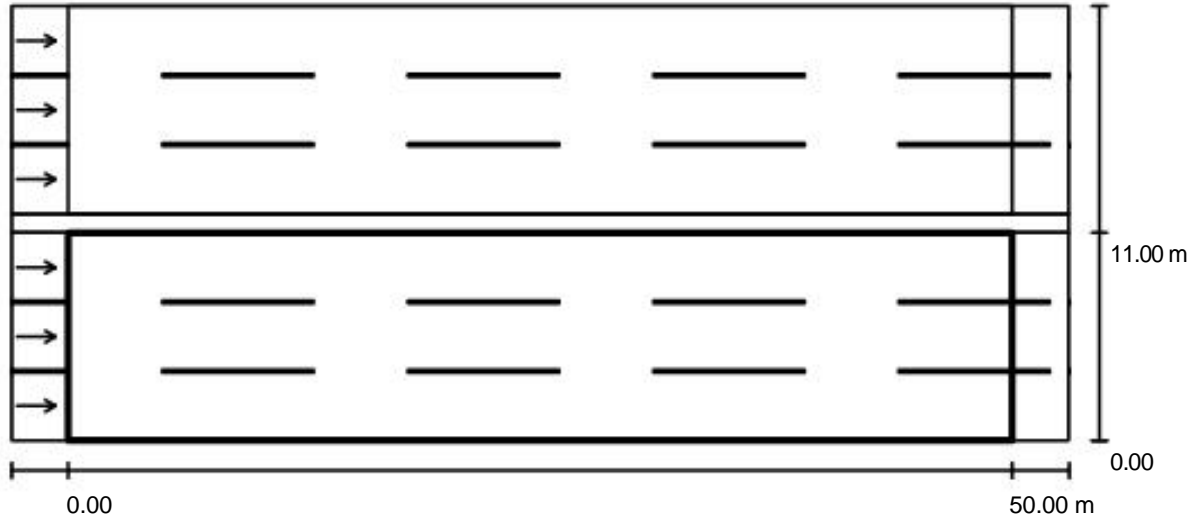
0 1.88 3.75 5.63 7.50 9.38 11.25 13.13 15

lx

Leotek Electronics Co.

Operator Jean-Charles MATHIEU
 Telephone
 Fax
 e-Mail jcmathieu@leddistribution.fr

GC2-100E-MV-CW-3M-GY-530-50m / Roadway 1 / Results overview



Light loss factor: 1.00

Scale 1:401

Grid: 17 x 9 Points

Accompanying Street Elements: Roadway 1.

tarmac: R3, q0: 0.070

Selected Lighting Class: ME3a

(All lighting performance requirements are met.)

	L_{av} [cd/m ²]	U0	UI	TI [%]	SR
Calculated values:	1.02	0.49	0.74	14	0.92
Required values according to class:	≥ 1.00	≥ 0.40	≥ 0.70	≤ 15	≥ 0.50
Fulfilled/Not fulfilled:	✓	✓	✓	✓	✓

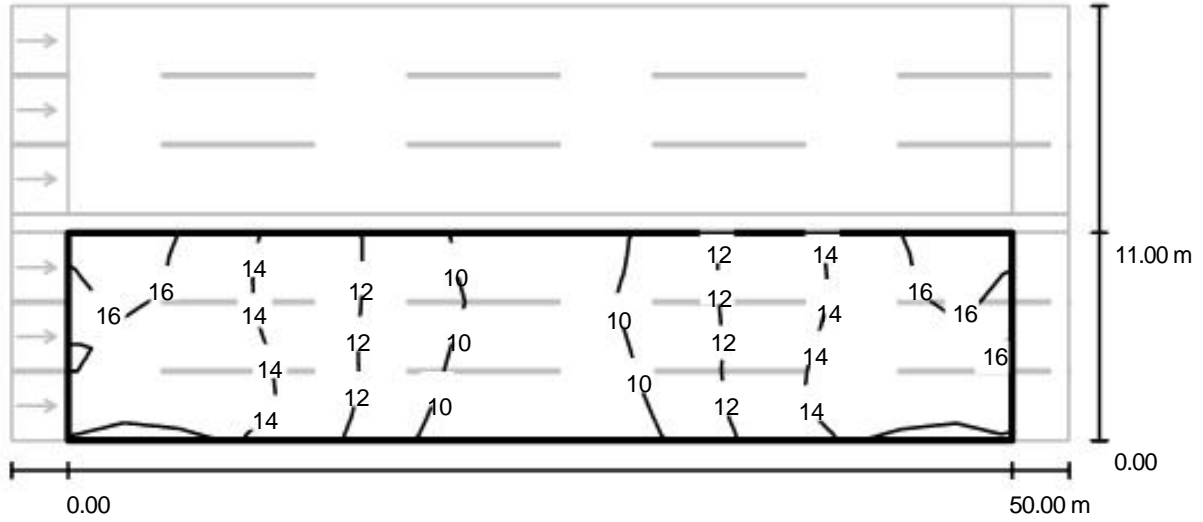
Assigned observer (3 Pieces):

No.	Observer	Position [m]	L_{av} [cd/m ²]	U0	UI	TI [%]
1	觀察器 1	(-60.000, 1.833, 1.500)	1.22	0.49	0.81	8
2	觀察器 2	(-60.000, 5.500, 1.500)	1.14	0.49	0.80	12
3	觀察器 3	(-60.000, 9.167, 1.500)	1.02	0.52	0.74	14

Leotek Electronics Co.

Operator Jean-Charles MATHIEU
Telephone
Fax
e-Mail jcmathieu@leddistribution.fr

GC2-100E-MV-CW-3M-GY-530-50m / Roadway 1 / Isolines (E)



Values in Lux, Scale 1 : 401

Grid: 17 x 9 Points

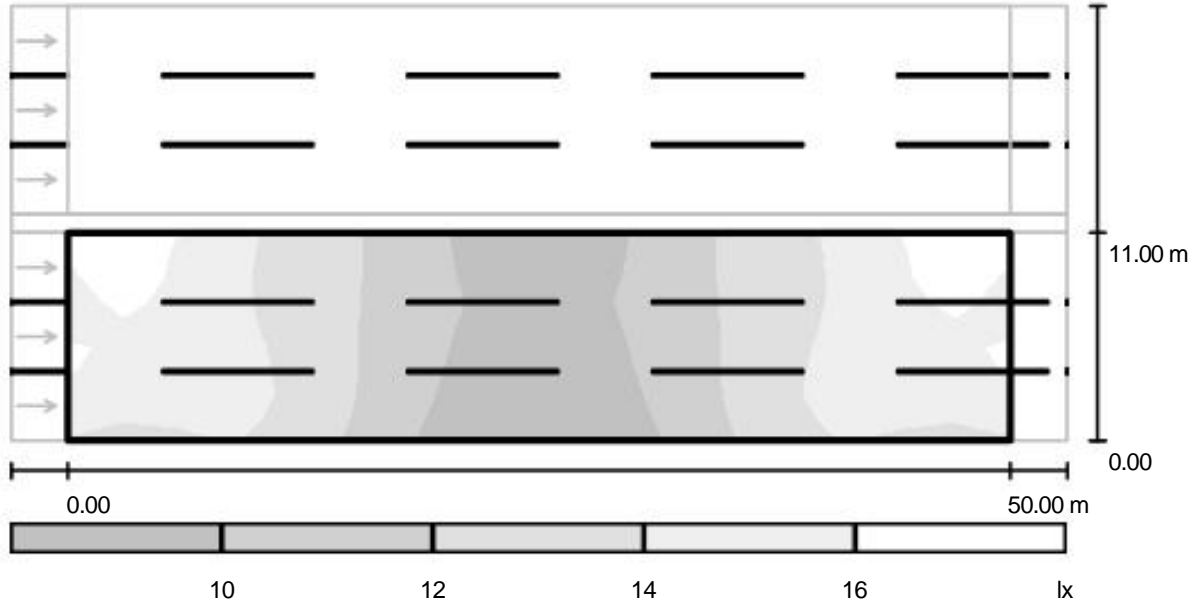
E_{av} [lx]	E_{min} [lx]	E_{max} [lx]	u_0	E_{min} / E_{max}
13	8.59	17	0.671	0.512



Leotek Electronics Co.

Operator Jean-Charles MATHIEU
Telephone
Fax
e-Mail jcmathieu@leddistribution.fr

GC2-100E-MV-CW-3M-GY-530-50m / Roadway 1 / Greyscale (E)



Scale 1 : 401

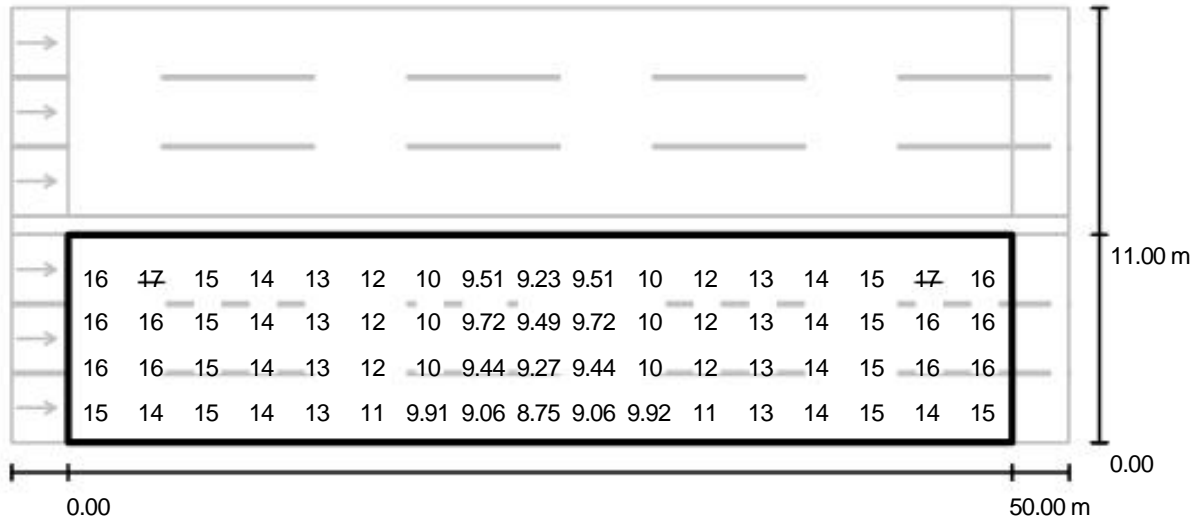
Grid: 17 x 9 Points

E_{av} [lx]	E_{min} [lx]	E_{max} [lx]	u_0	E_{min} / E_{max}
13	8.59	17	0.671	0.512

Leotek Electronics Co.

Operator Jean-Charles MATHIEU
 Telephone
 Fax
 e-Mail jcmathieu@leddistribution.fr

GC2-100E-MV-CW-3M-GY-530-50m / Roadway 1 / Value Chart (E)



Values in Lux, Scale 1 : 401

Not all calculated values could be displayed.

Grid: 17 x 9 Points

E_{av} [lx]	E_{min} [lx]	E_{max} [lx]	u0	E_{min} / E_{max}
13	8.59	17	0.671	0.512

Leotek Electronics Co.

Operator Jean-Charles MATHIEU
 Telephone
 Fax
 e-Mail jcmathieu@leddistribution.fr

GC2-100E-MV-CW-3M-GY-530-50m / Roadway 1 / Table (E)



- Current Selection
- Further Selections

10.389	16	17	15	14	13	12	10	9.46	9.18	9.46
9.167	16	17	15	14	13	12	10	9.51	9.23	9.51
7.944	16	17	15	14	13	12	10	9.72	9.49	9.72
6.722	16	16	15	14	13	12	10	9.72	9.49	9.72
5.500	16	16	15	14	13	12	10	9.63	9.41	9.63
4.278	16	16	15	14	13	12	10	9.44	9.27	9.44
3.056	15	15	15	14	13	12	10	9.28	8.93	9.28
1.833	15	14	15	14	13	11	9.91	9.06	8.75	9.06
0.611	14	14	14	14	13	11	9.68	8.86	8.59	8.86
m	1.471	4.412	7.353	10.294	13.235	16.176	19.118	22.059	25.000	27.941

Attention: The coordinates refer to the image above. Values in Lux.

Grid: 17 x 9 Points

E_{av} [lx]	E_{min} [lx]	E_{max} [lx]	u0	E_{min} / E_{max}
13	8.59	17	0.671	0.512



Leotek Electronics Co.

Operator Jean-Charles MATHIEU
 Telephone
 Fax
 e-Mail jcmathieu@leddistribution.fr

GC2-100E-MV-CW-3M-GY-530-50m / Roadway 1 / Table (E)



Current Selection
 Further Selections

10.389	10	12	13	14	15	17	16
9.167	10	12	13	14	15	17	16
7.944	10	12	13	14	15	17	16
6.722	10	12	13	14	15	16	16
5.500	10	12	13	14	15	16	16
4.278	10	12	13	14	15	16	16
3.056	10	12	13	14	15	15	16
1.833	9.92	11	13	14	15	14	15
0.611	9.68	11	13	14	14	14	14
m	30.882	33.824	36.765	39.706	42.647	45.588	48.529

Attention: The coordinates refer to the image above. Values in Lux.

Grid: 17 x 9 Points

E_{av} [lx]	E_{min} [lx]	E_{max} [lx]	u0	E_{min} / E_{max}
13	8.59	17	0.671	0.512